

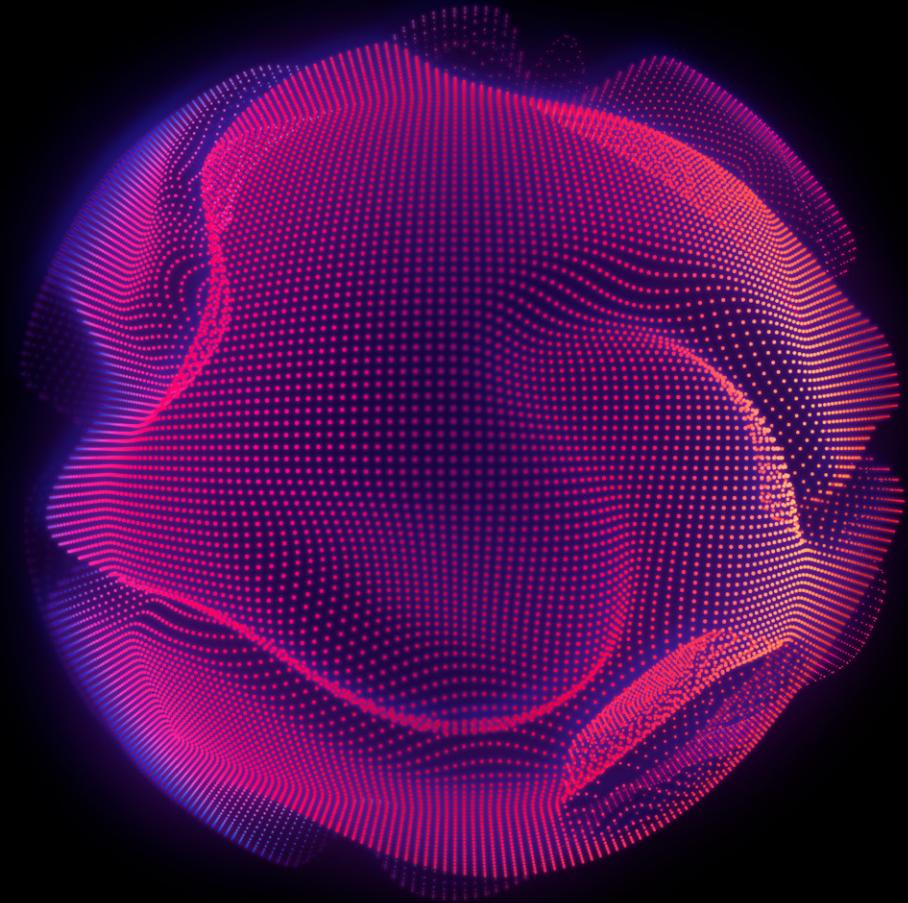
KerusCloud[®]

Hothouse

Overview and FAQs

Trialling KerusCloud with a Hothouse Project

Revolutionising clinical trial design with *in silico*
studies using synthetic patient-level data.



Discover

KerusCloud®

Hothouse Projects

Tailored software and supported service access for exclusive projects.

Exploristics has developed a state-of-the-art clinical trial simulation platform KerusCloud which reduces the risk of failure, cost and time for clinical trials and development programmes. This software allows the realistic simulation of complex clinical and biological data enabling users to rapidly test the impact of key assumptions by running virtual studies and evaluating the probability of success *in silico*.

KerusCloud Hothouse projects give **potential users the opportunity to trial the software's ground-breaking capabilities, with access to the software completely free for its duration.**

The primary purpose of a Hothouse project is to help a customer build a business case for licensing KerusCloud.



FAQ No. 1

What is a KerusCloud Hothouse project?

It is a collaborative project where potential users work alongside Exploristics' in-house team of experts, using the software to deliver an impactful solution for an important problem for the customer. Hothouse projects will be clearly defined during an initial scoping process, have agreed outputs and success criteria.



FAQ No. 2

What are the benefits of a Hothouse project?

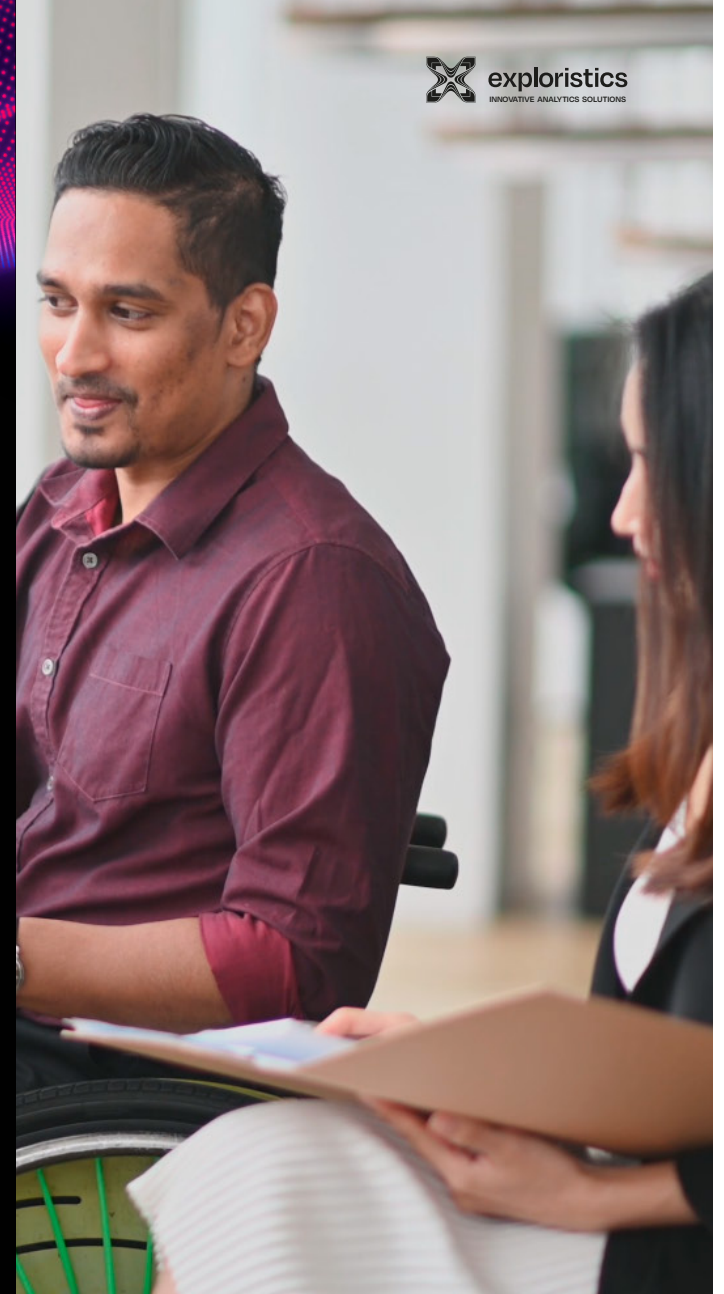
A Hothouse project provides a low risk, low-cost opportunity for prospective users to trial Exploristics' KerusCloud software to discover its ground-breaking study design capabilities for themselves. With free access to the software for the duration of the project your team will be able to:

- + Get hands on with the software to rapidly evaluate numerous scenarios to identify an optimal solution to a pre-scoped problem.
- + Fully evaluate the utility going forward of this transformative technology before taking the next step and purchasing a licence.

You will also receive:

- + Direct influence and input into KerusCloud roadmap for further development.
- + Access to new capabilities and updates as they become available.

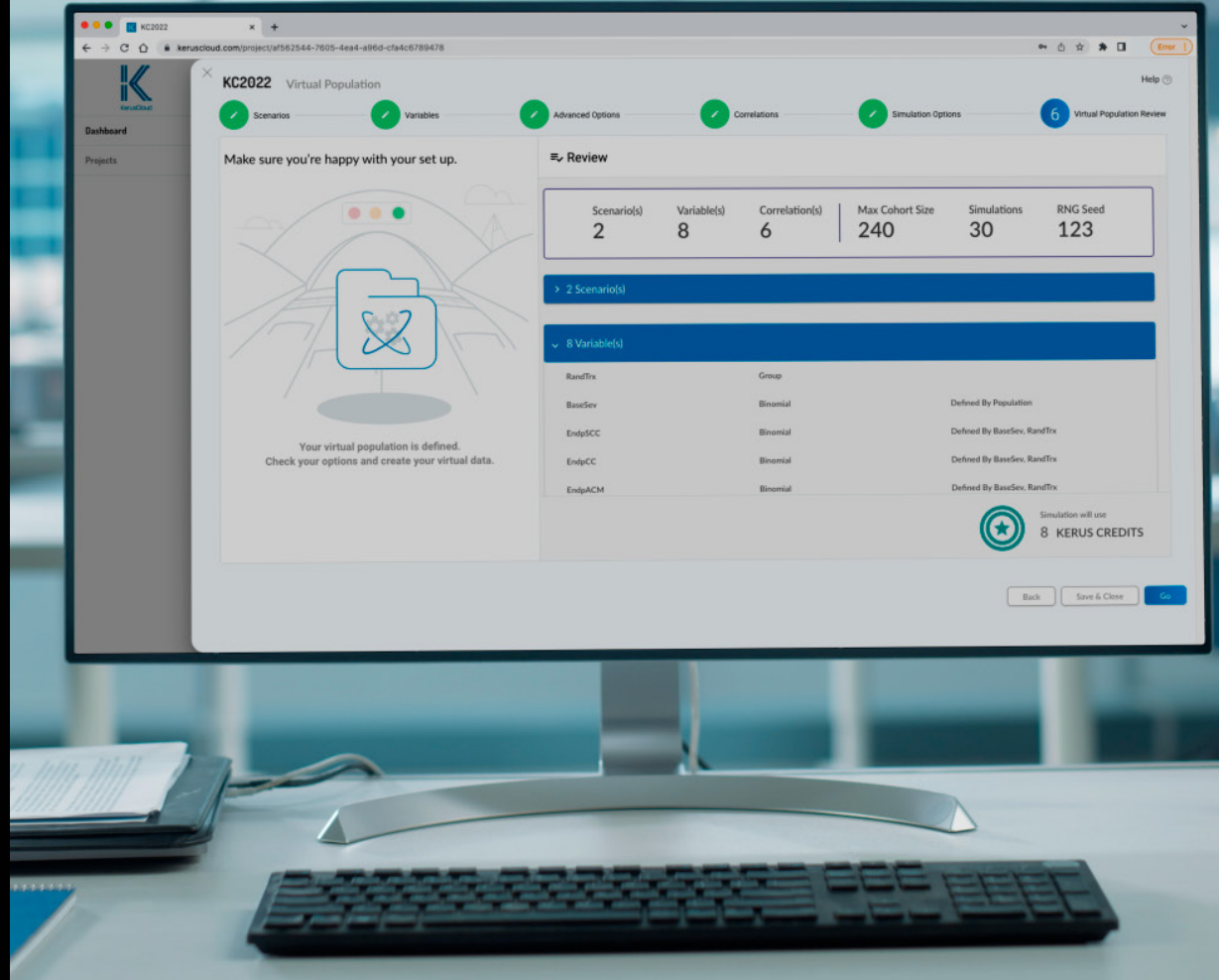
+ A discount in KerusCloud license fees for the first year if you sign on following the Hothouse project.



FAQ No. 3

How much does a typical Hothouse project cost?

Access to our proprietary KerusCloud software is completely free for the duration of the Hothouse project. Some training and technical support will also be provided free of charge. Many Hothouse projects are free of charge. However, depending on your in-house capabilities and available resources, additional services may be needed to support the Hothouse project. These can be purchased and will be discounted. Therefore, the overall cost will depend on its scope and the resource required. We will work closely with you to define these in the initial scoping process.



FAQ No. 4

How do I select the right kind of study to generate a good use case?

During a booked consultation, we will work with you to discuss potential applications of the software, the available information, the timelines, the strategic importance, and the alignment with KerusCloud's capabilities. We will use this information to help you select the right use case and then work with you to produce a high-level Hothouse project plan. Examples of studies that could be used as the basis for a use case include but are not limited to:

- ⊕ Evaluating probability of success for study design and analysis options.
- ⊕ Identifying the best endpoint and patient subgroups most responsive to treatment.
- ⊕ Developing a robust evidence package for drug approval.
- ⊕ Selecting the best overall strategy for study and drug development path.
- ⊕ Evaluating new technologies/approaches in drug development to support investment decisions (e.g., digital health solutions versus standard approaches)
- ⊕ Implementing Precision Medicine strategies.



FAQ No. 5

What stage should the CDP/design be at to carry out a Hothouse project?

You can engage in a Hothouse project at any stage of clinical development planning, although to gain the maximum value and strategic benefits from the KerusCloud insights generated during the project we would recommend that you engage at the earliest opportunity. There are certain types of studies that are standard and do not require substantive design evaluation (e.g., first in human studies). However, you can still gain useful insights where these studies are considered as part of a broader development programme and are used as part of the optimisation of the programme for example if considering pharmacodynamic endpoints/biomarkers or adaptive approaches through interims.



FAQ No. 6

I don't have any previous study or historical data. Can I still engage in a Hothouse project?

Yes, if you don't yet have your own data to use for a Hothouse project but wish to consider using KerusCloud to help design an upcoming study you can still trial its capabilities using the example datasets we provide. We can load these into the software and then guide you as to how best to use these to investigate the types of study design you might be interested in for your own planned clinical project. We can also source relevant external data that could be used as part of the Hothouse utilising our in-house Data Strategy Team.



FAQ No. 7

What are the example datasets available and how will they be used?

Exploristics has developed a series of disease model libraries containing datasets based around key therapeutic areas or interventions that can be employed to illustrate how the software can be used to investigate study design.

For more information on our case studies, please visit our website.



FAQ No. 8

Do I need to have a statistician to run this and how much wrap-around biostatistics support is provided?

KerusCloud was developed to facilitate earlier engagement between project teams and statisticians. Typically, the main user is a statistician but as KerusCloud has an easy-to-use point and click interface, anyone with knowledge of statistics can use it. You do not need your own statistician to run KerusCloud if you have no in-house statistics capability.

We can run the entire project for you.



FAQ No. 9

What happens if the study takes longer than 4 weeks?

We will fully scope the project with you during a free consultation to ensure that the study selected for your Hothouse project has a reasonable chance of being concluded by four weeks. We would normally expect that you dedicate the resource to the project to ensure it is completed within the timeframe. However, we do understand that there are sometimes extenuating factors that get in the way. If the project overruns, we will work with you to find the best way to complete it within a reasonable timeframe.



We are confident that KerusCloud will be able to help solve your study design queries. If you are satisfied with the outputs KerusCloud has delivered following a Hothouse project, enjoy the benefits of a discount in KerusCloud license fees for the first year if you sign on following the Hothouse project. If you are not in a position to license the software, we will keep you updated about new developments and try to find another opportunity in the future.

Want to know more? Take the next step and book a Hothouse consultation.

Get in touch with us directly or book a free one-to-one Hothouse consultation on our website. During the consultation we will work with you to scope and define a suitable Hothouse project and agree outputs, resources, timelines and costs.

